



TUNKERS-MASTECH
Motion in Automation.

Tunkers NAAMS Clamp Arm Catalogue



Tunkers Clamp Part Number Breakdown

Tunkers Standard Clamp Arms and Callouts

VU 50.1 BR2 A05 T12 5-135A05 IS A 20mm WIDE SHAFT

Arms 206-208 (11mm screw & 8mm dowel) (-15mm offset)

216-218 (11mm screw & 8mm dowel) (25mm offset)

226-228 (11mm screw & 8mm dowel) (50mm offset)

236-238 (9mm screw & 6mm dowel) (-15mm offset)

246-248 (9mm screw & 6mm dowel) (25mm offset)

256-258 (9mm screw & 6mm dowel) (50mm offset)

401-403 (9mm screw & 8mm dowel) (-15mm offset)

411-413 (9mm screw & 8mm dowel) (25mm offset)

421-423 (9mm screw & 8mm dowel) (50mm offset)

VU 63.1 BR2 A05 T12 5-135 A05 IS A 20mm WIDE SHAFT

Arms: 507-512 (9mm screw & 6mm dowel) (-15mm offset)

519-524 (9mm screw & 6mm dowel) (25mm offset)

531-536 (9mm screw & 6mm dowel) (70mm offset)

543-548 (9mm screw & 6mm dowel) (120mm offset)

513-518 (9mm screw & 8mm dowel) (-15mm offset)

525-530 (9mm screw & 8mm dowel) (25mm offset)

537-542 (9mm screw & 8mm dowel) (70mm offset)

549-554 (9mm screw & 8mm dowel) (120mm offset)

VU 63.1 BR2 A035 T12 5-135A035 IS A 25mm WIDE SHAFT

Arms: 007-012 (11mm screw & 8mm dowel) (-15mm offset)

019-024 (11mm screw & 8mm dowel) (25mm offset)

031-036 (11mm screw & 8mm dowel) (70mm offset)

043-048 (11mm screw & 8mm dowel) (120mm offset)

VU 80.1 BR2 A05 T12 5-135A05 IS A 25mm WIDE SHAFT

Arms: 110-118 (11mm screw & 8mm dowel) (-20mm offset)

130-138 (11mm screw & 8mm dowel) (25mm offset)

150-158 (11mm screw & 8mm dowel) (70mm offset)

170-178 (11mm screw & 8mm dowel) (120mm offset)

Clamp & Arm Part Number Breakdowns

When Looking Down at the Clamp:

V 40 BR2 A00 T12 10-135A00 MEANS NO ARM

V 40 BR2 A10 T12 10-135A10 MEANS ARM IS CENTERED

V 40 BR2 A11 T12 10-135A11 MEANS ARM IS TO THE RIGHT

V 40 BR2 A12 T12 10-135A12 MEANS ARM IS TO THE LEFT

V 40 BR2 EF123 T12 10-90EF123 IS AN ALUMINUM ARM WITH LARGE OFFSET

V2 40 BR2 A10 T12 10-105ARM IS STILL CENTERED

V2 40 BR2 A11 T12 10-105ARM IS STILL TO THE RIGHT. (A12 ARM USED IN REVERSE POSITION)

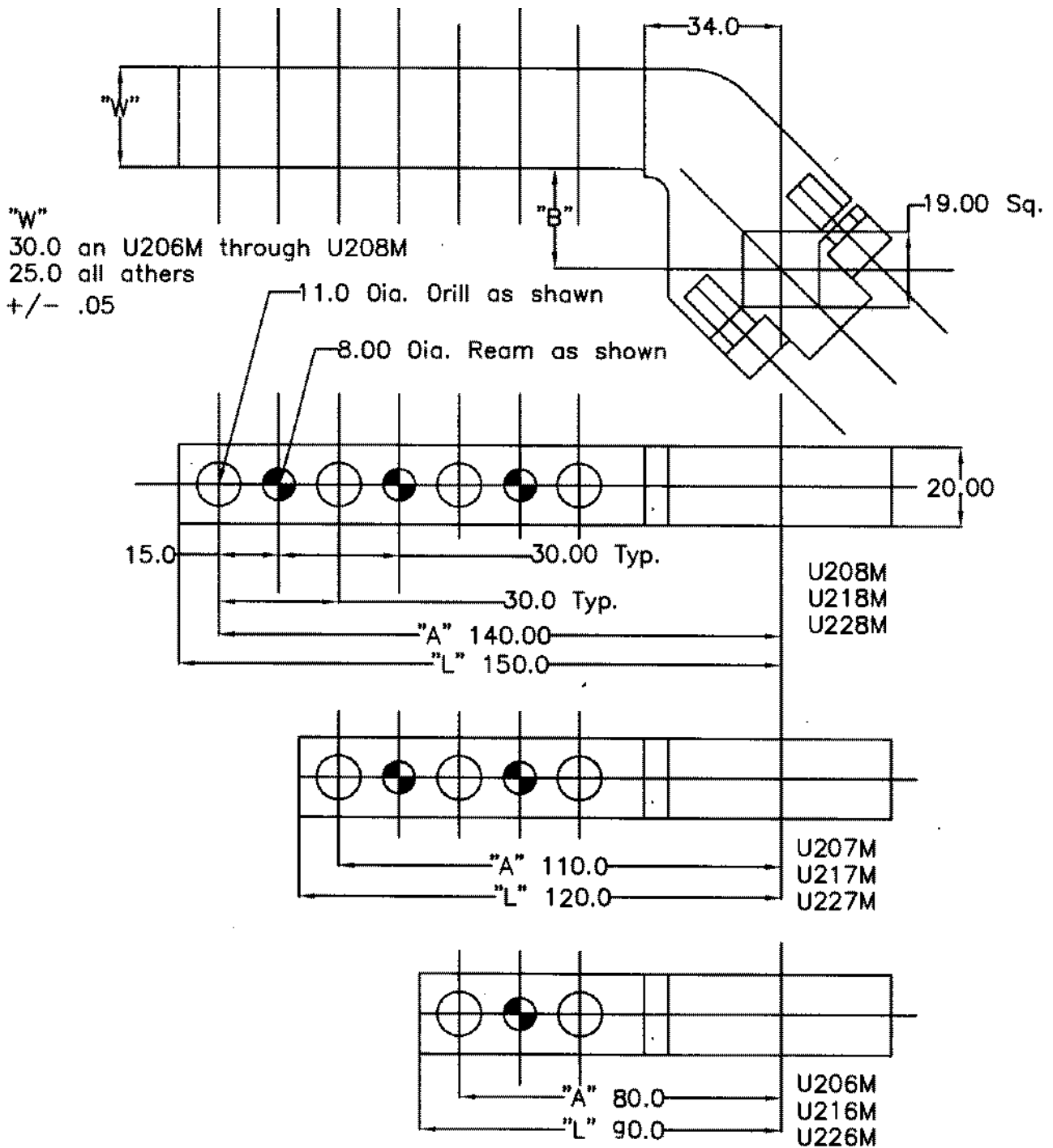
V2 40 BR2 A12 T12 10-105ARM IS STILL TO THE LEFT. (A11 ARM USED IN REVERSE POSITION)

THE ABOVE IS THE SAME FOR THE V 50.1, 63.1, 80.1 CLAMPS (EXCEPT THE EF123 ARM)

Clamp Arm, NAAMS Type

KU 50 V

for KU 50 V Clamps



"L"	"A" +/- .05	"B"	Number	"B"	Number	"B"	Number
90.0	80.0	(-)15.0	U206M	25.0	U216M	50.0	U226M
120.0	110.0	(-)15.0	U207M	25.0	U217M	50.0	U227M
150.0	140.0	(-)15.0	U208M	25.0	U218M	50.0	U228M

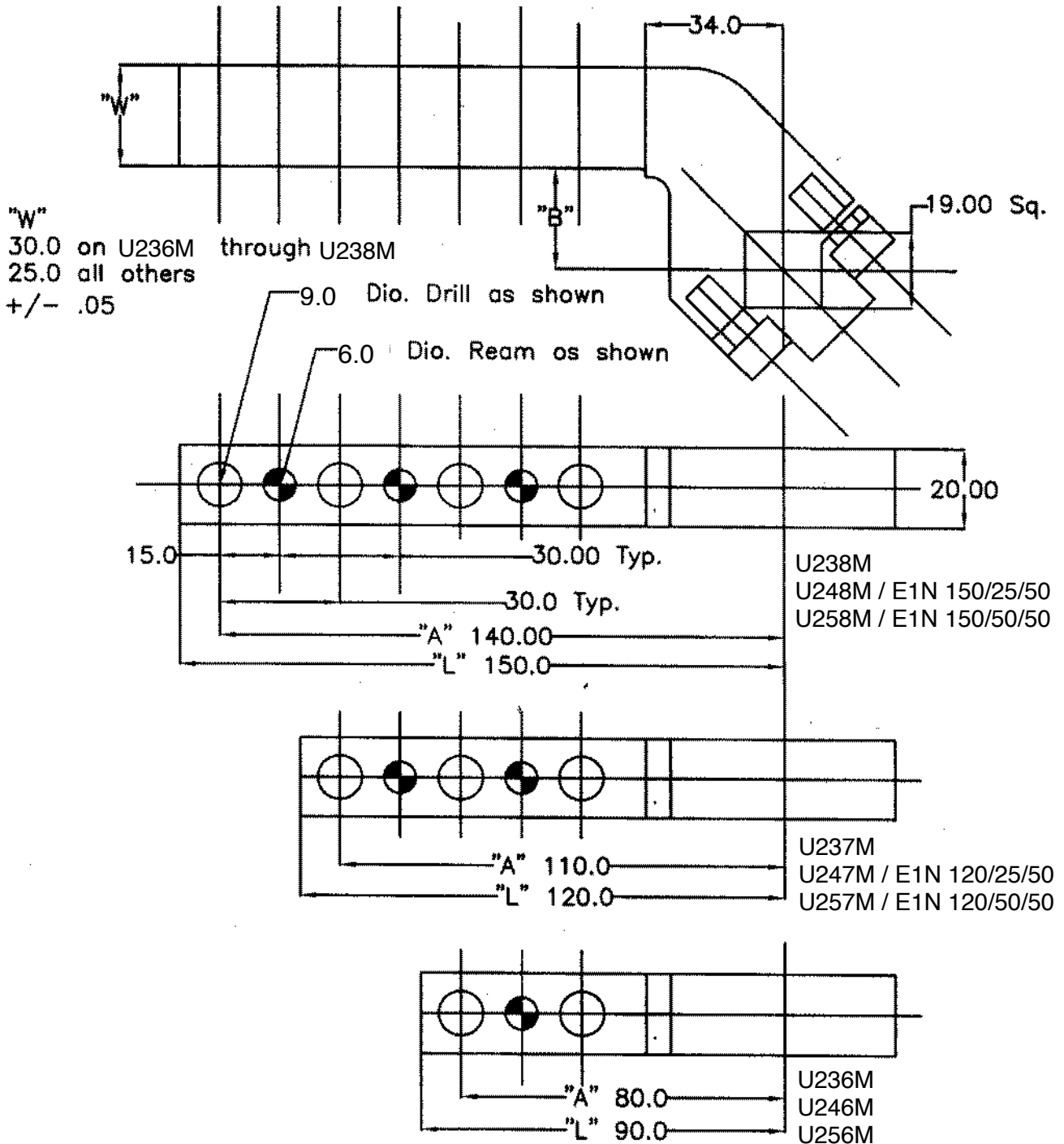
Ordering Example:

U206M = Type of Clamp-Arm

Clamp arm NAAMS (E1N)

Pneumatic Power Clamps

VU 50...



Ordering example:

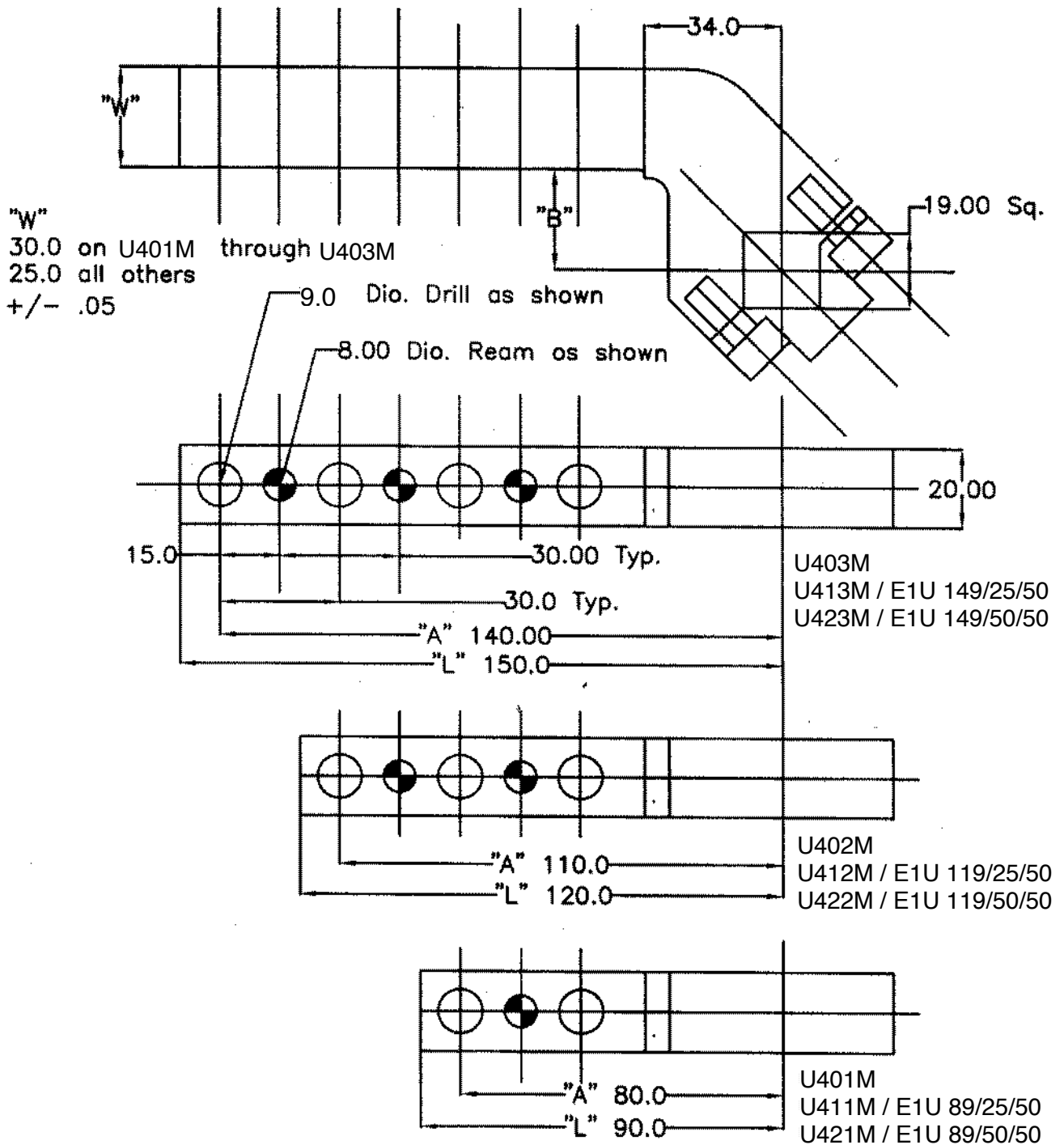
U236M = Clamp arm type

„L“	„A“ +/- .05	„B“	Number	„B“	Number	„B“	Number
90.0	80.0	(-)15.0	U236M	25.0	U246M	50.0	U256M
120.0	110.0	(-)15.0	U237M	25.0	U247M	50.0	U257M
150.0	140.0	(-)15.0	U238M	25.0	U248M	50.0	U258M

Clamp arm NAAMS (E1U)

Pneumatic Power Clamps

VU 50...



Ordering example:

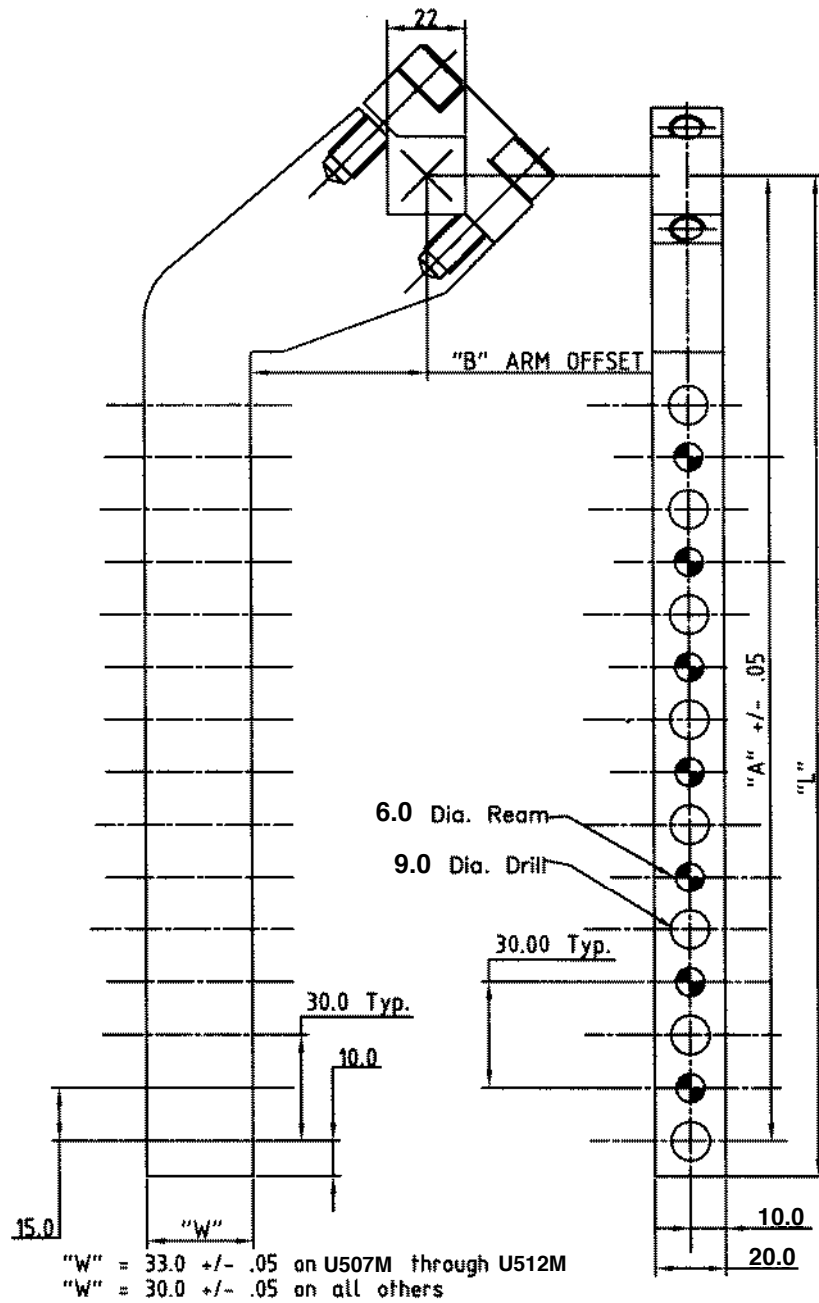
U403M = Clamp arm type

„L“	„A“ +/- .05	„B“	Number	„B“	Number	„B“	Number
90.0	80.0	(-)15.0	U401M	25.0	U411M	50.0	U421M
120.0	110.0	(-)15.0	U402M	25.0	U412M	50.0	U422M
150.0	140.0	(-)15.0	U403M	25.0	U413M	50.0	U423M

Clamp arm NAAMS

Vario Power Clamps

VU 63.1 BR2 A05



Ordering example:

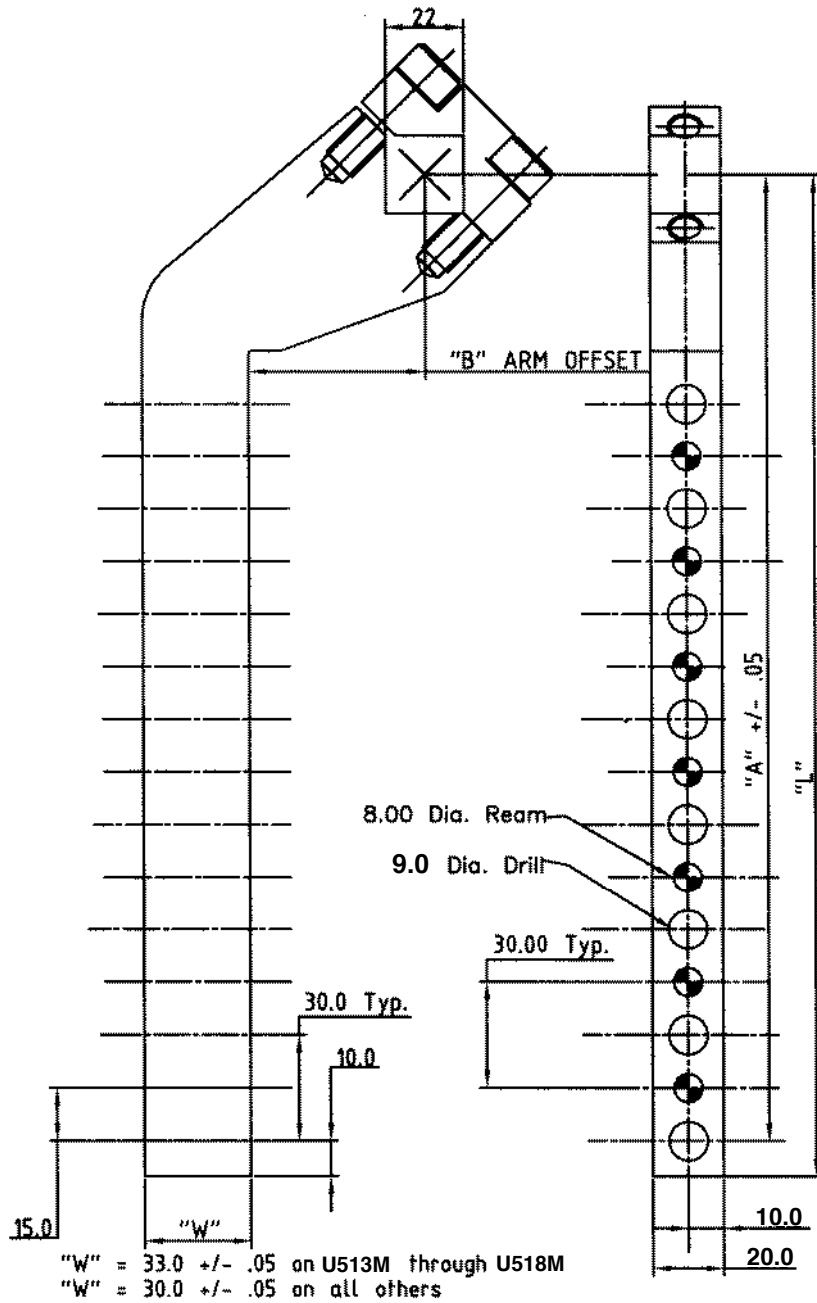
U507M = Clamp arm type

„L“	„A“ +/- .05	„B“	Number	„B“	Number	„B“	Number	„B“	Number
135.0	125.0	(-)15.0	U507M	25.0	U519M	70.0	U531M	120.0	U543M
165.0	155.0	(-)15.0	U508M	25.0	U520M	70.0	U532M	1200	U544M
195.0	185.0	(-)15.0	U509M	25.0	U521M	70.0	U533M	120.0	U545M
225.0	215.0	(-)15.0	U510M	25.0	U522M	70.0	U534M	120.0	U546M
255.0	245.0	(-)15.0	U511M	25.0	U523M	70.0	U535M	120.0	U547M
285.0	275.0	(-)15.0	U512M	25.0	U524M	70.0	U536M	120.0	U548M

Clamp arm NAAMS

Vario Power Clamps

VU 63.1 BR2 A05



Ordering example:

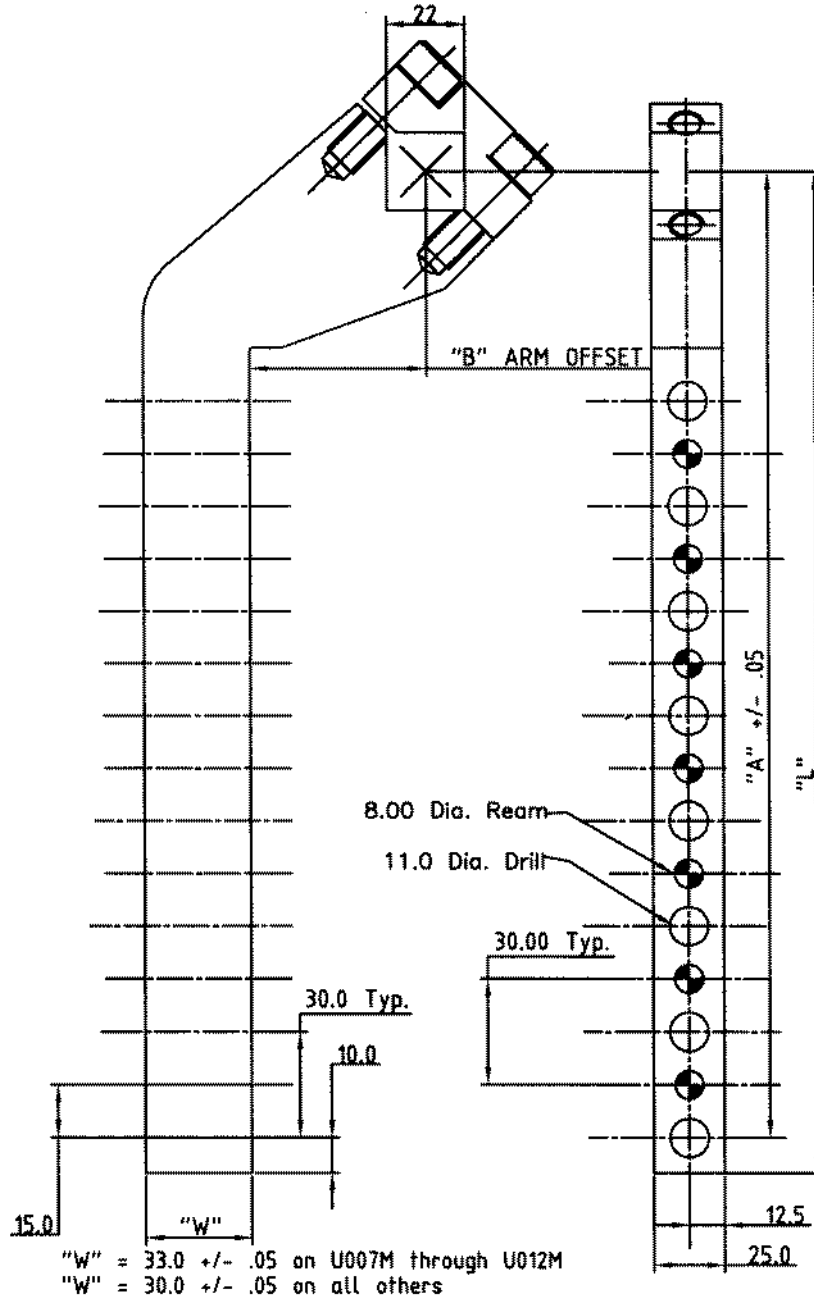
U513M = Clamp arm type

„L“	„A“ +/- .05	„B“	Number	„B“	Number	„B“	Number	„B“	Number
135.0	125.0	(-)15.0	U513M	25.0	U525M	70.0	U537M	120.0	U549M
165.0	155.0	(-)15.0	U514M	25.0	U526M	70.0	U538M	1200	U550M
195.0	185.0	(-)15.0	U515M	25.0	U527M	70.0	U539M	120.0	U551M
225.0	215.0	(-)15.0	U516M	25.0	U528M	70.0	U540M	120.0	U552M
255.0	245.0	(-)15.0	U517M	25.0	U529M	70.0	U541M	120.0	U553M
285.0	275.0	(-)15.0	U518M	25.0	U530M	70.0	U542M	120.0	U554M

Clamp Arm, NAAMS Type

for KU 63 V Clamps

KU 63 V



"L"	"A"	Number	"B"	Number	"B"	Number	"B"	Number	"B"
135.0	125.0	U007M	-15	U019M	25	U031M	70	U043M	120
165.0	155.0	U008M	-15	U020M	25	U032M	70	U044M	120
195.0	185.0	U009M	-15	U021M	25	U033M	70	U045M	120
225.0	215.0	U010M	-15	U022M	25	U034M	70	U046M	120
255.0	245.0	U011M	-15	U023M	25	U035M	70	U047M	120
285.0	275.0	U012M	-15	U024M	25	U036M	70	U048M	120

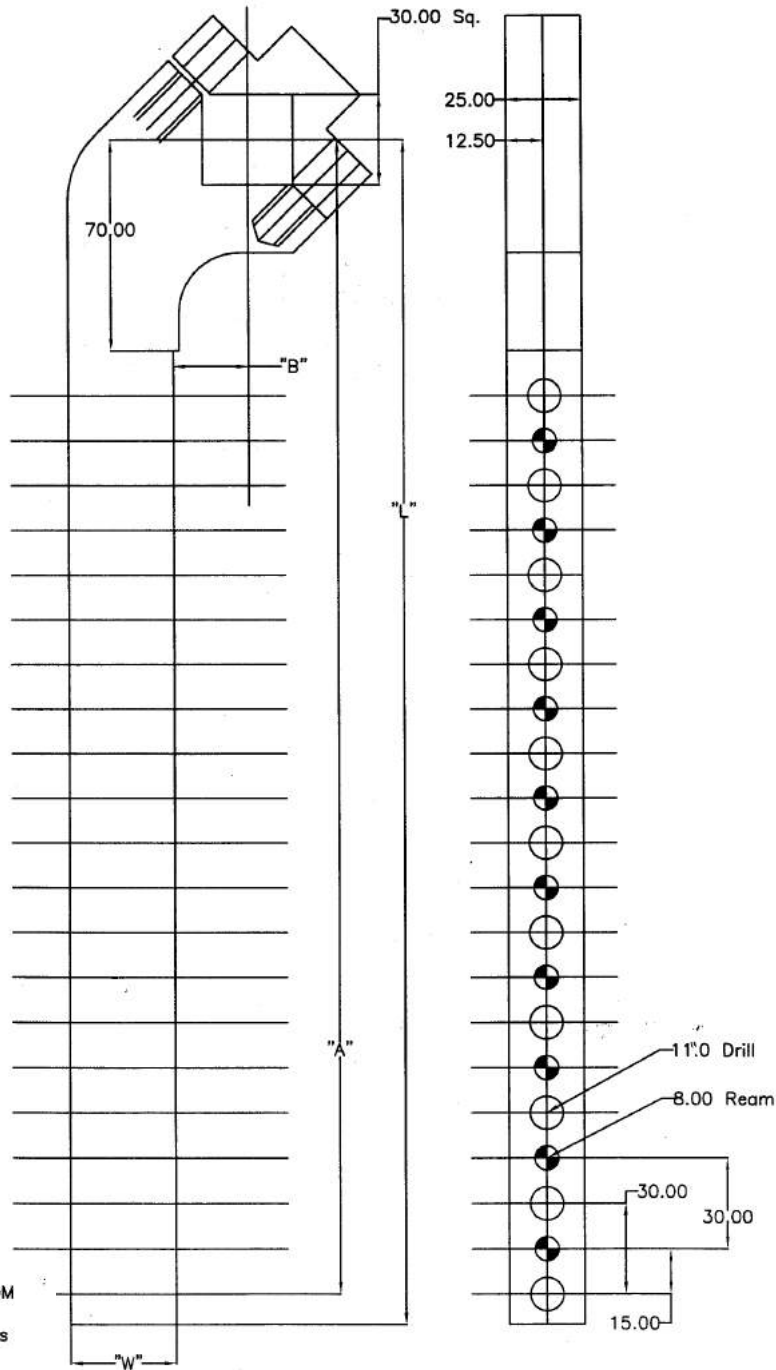
Ordering Example:

U007M = Type of Clamp-Arm

Clamp Arm, NAAMS Type

for KU 80 Clamps

KU 80



"W" = 44.0 +/- .05 on U110M through U118M
 "W" = 35.0 +/- .05 all others

"L"	"A" +/- .05	"B"	Number	"B"	Number	"B"	Number	"B"	Number
155.0	145.0	(-)20.0	U110M	25.0	U130M	70.0	U150M	120.0	U170M
185.0	175.0	(-)20.0	U111M	25.0	U131M	70.0	U151M	120.0	U171M
215.0	205.0	(-)20.0	U112M	25.0	U132M	70.0	U152M	120.0	U172M
245.0	235.0	(-)20.0	U113M	25.0	U133M	70.0	U153M	120.0	U173M
275.0	265.0	(-)20.0	U114M	25.0	U134M	70.0	U154M	120.0	U174M
305.0	295.0	(-)20.0	U115M	25.0	U135M	70.0	U155M	120.0	U175M
335.0	325.0	(-)20.0	U116M	25.0	U136M	70.0	U156M	120.0	U176M
365.0	355.0	(-)20.0	U117M	25.0	U137M	70.0	U157M	120.0	U177M
395.0	385.0	(-)20.0	U118M	25.0	U138M	70.0	U158M	120.0	U178M

Ordering Example:

U110M = Type of Clamp-Arm